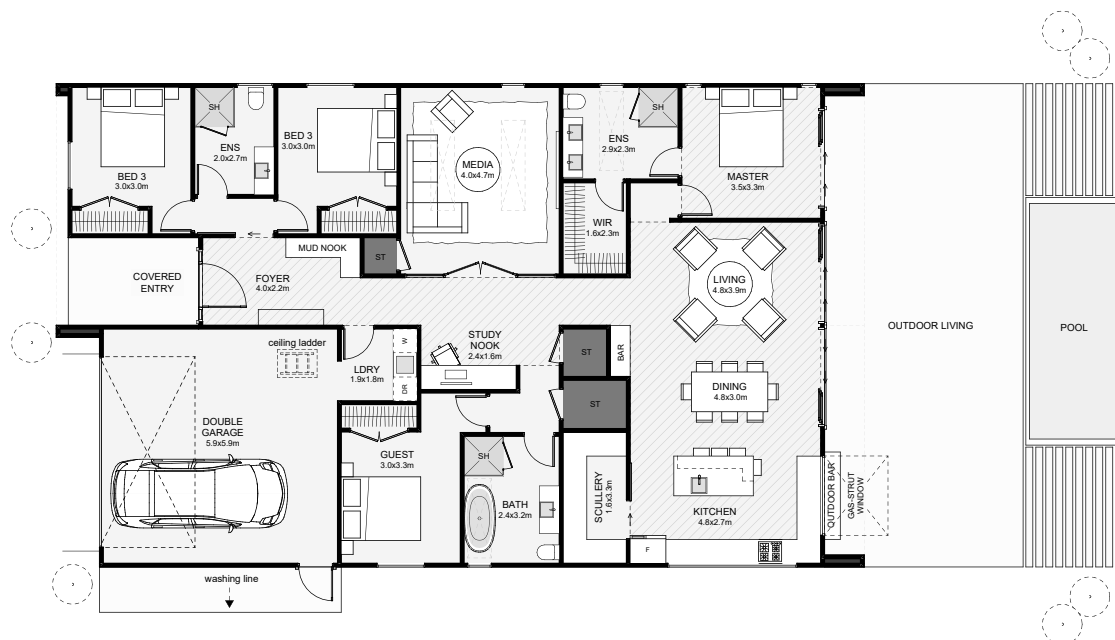




This modern home includes more than first meets the eye. Under one gable roof, four bedrooms are all positioned for multi-use; one as a guest room, the primary bedroom private with patio access, and two bedrooms with a jack and jill style bathroom. This home also includes a study nook, a media room with full-height glazed doors, lots of storage, a butlers pantry and a mud nook in the foyer. This is a family home ready for a lot of fun!



Floor Area: 220m²

2
 4+
 3
 2

20.3m
 12.2m

Contact Jason:

Ph: 0277228930

E: jasonaddaroom@extra.co.nz

www.addaroom.co.nz



ADDAROOM
Build & Design