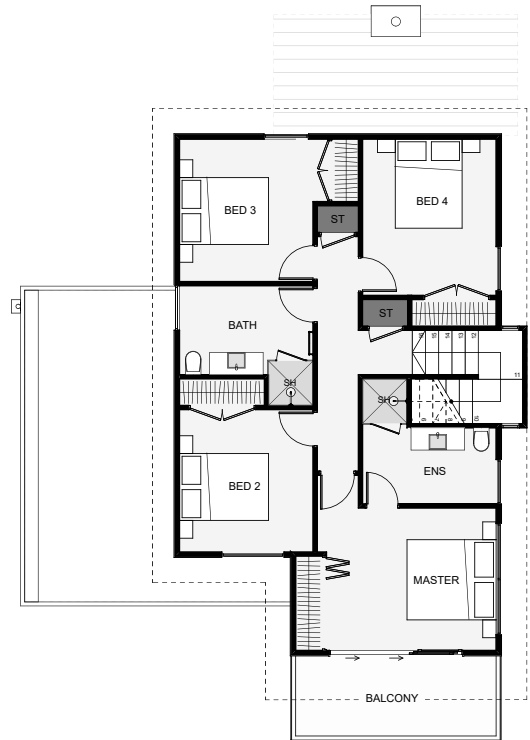
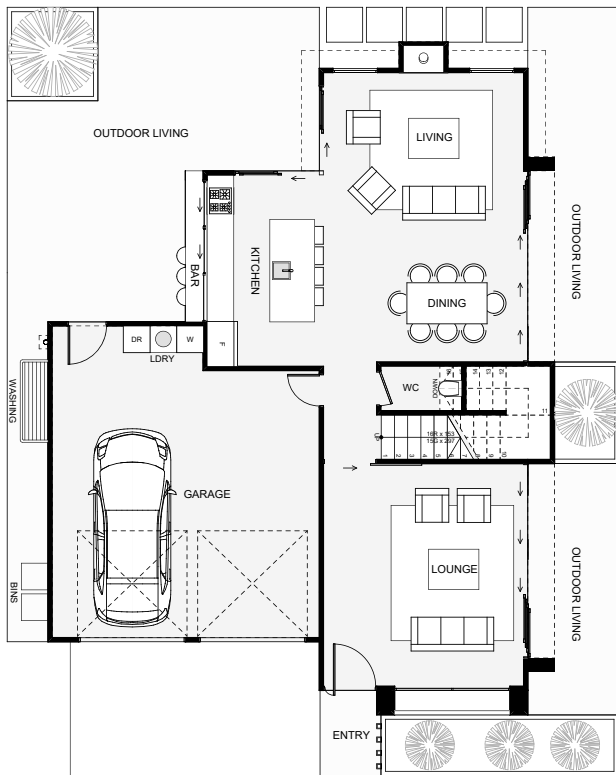




This modern, sleek four bedroom home packs a lot of features within its small footprint. The main living layout integrates seamlessly with dual outdoor living spaces which are designed around both morning and evening sun positions. Enjoy a view from the master balcony and its large slider door with overhead windows. This home looks great, is highly functional and could add a lot of value to your section!



Floor Area: 195m²

 2  4  2+  2  11.4m  15.1m

Contact us:

Call Philip: 0407 803 310

E: philip@bingleybuild.com.au

www.bingleybuild.com.au



BINGLEY
Design & Build.