

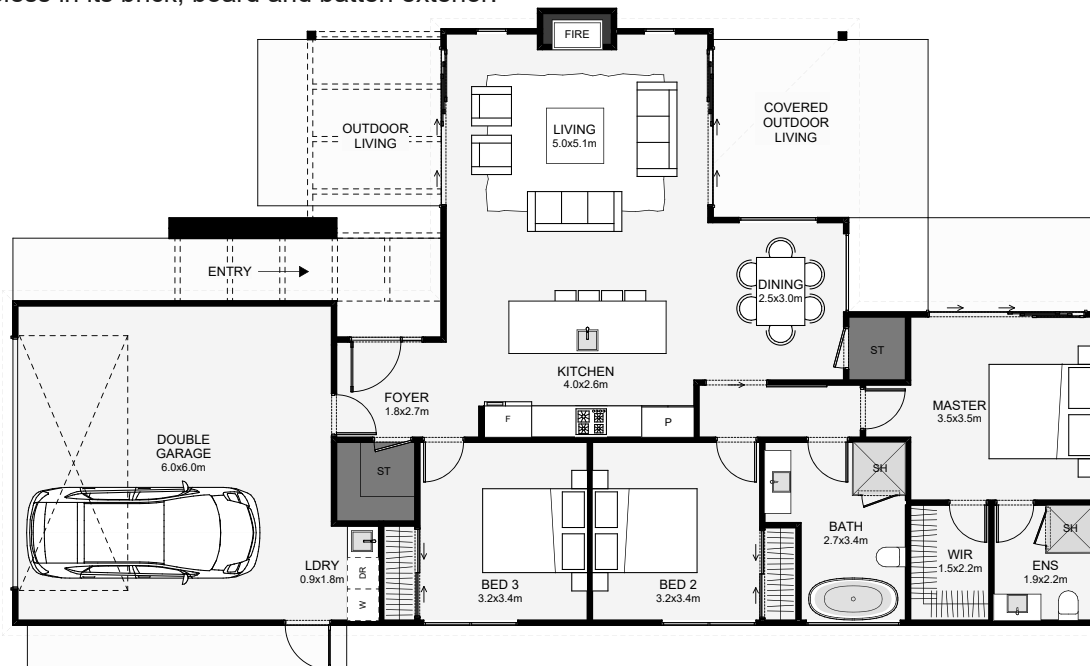


Roma



HUNTER
HOMES BUILDING GROUP

The shape of this home maximises its outdoor living space. Inside, the living room extends out from the kitchen so both morning and afternoon sun can be enjoyed, also creating two outdoor living spaces. The dining is positioned in a cosy nook allowing for unique ceiling finishes. The master includes an ensuite and walk-in wardrobe; the bathroom can be quickly accessed with its position close to both bedrooms and the living. This home has a sophisticated charm that'll prove timeless in its brick, board and batten exterior!



Floor Area: 157m²

2
 3
 2
 1
 20.7m 11.8m

Contact Finlay:

Ph: 027 424 1600

E: www.hunterhomes.co.nz

www.hunterhomes.co.nz



HUNTER
HOMES BUILDING GROUP