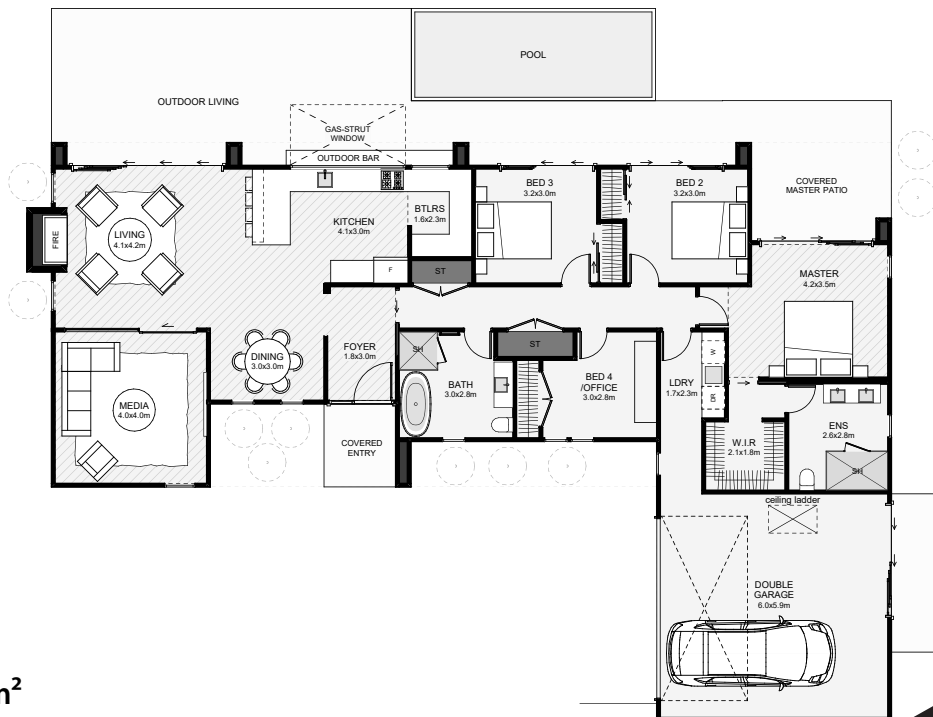




Designed to maximise views, most rooms in this home have an outlook north. Inside, the kitchen is central with a butlers pantry, a sizeable gas-strut window for the outdoor bar and expansive views across your property. The primary bedroom has a large covered private patio, a massive walk-in wardrobe and an ensuite that picks up the morning sun. Another cool feature is the full-height glazed slider in the media which allows light to pass through. If you're after a modern home, this is a great option.



Floor Area: 202m<sup>2</sup>



22.8m | 15.2m

Contact us:

Ph: 0277 508 926

E: horrellconstruction@gmail.com

www.horrellconstruction.co.nz



**HORRELL**  
CONSTRUCTION