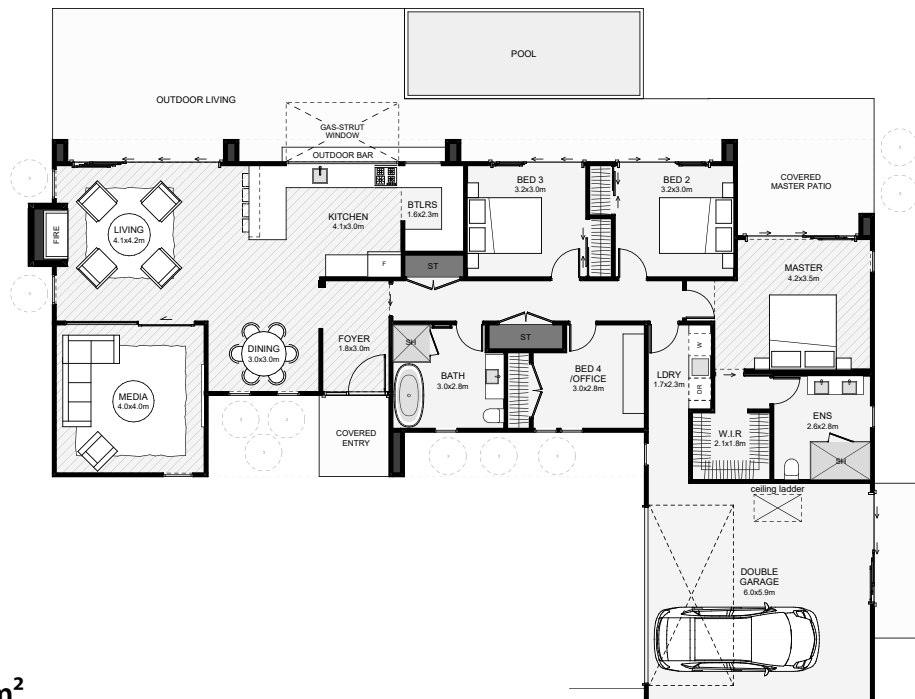




Designed to maximise views, most rooms in this home have an outlook north. Inside, the kitchen is central with a butlers pantry, a sizeable gas-strut window for the outdoor bar and expansive views across your property. The primary bedroom has a large covered private patio, a massive walk-in wardrobe and an ensuite that picks up the morning sun. Another cool feature is the full-height glazed slider in the media which allows light to pass through. If you're after a modern home, this is a great option.



Floor Area: 202m<sup>2</sup>



22.8m 15.2m

Contact Jason:

Ph: 0277228930

E: [jasonaddaroom@extra.co.nz](mailto:jasonaddaroom@extra.co.nz)

[www.addaroom.co.nz](http://www.addaroom.co.nz)



**ADDAROOM**  
Build & Design