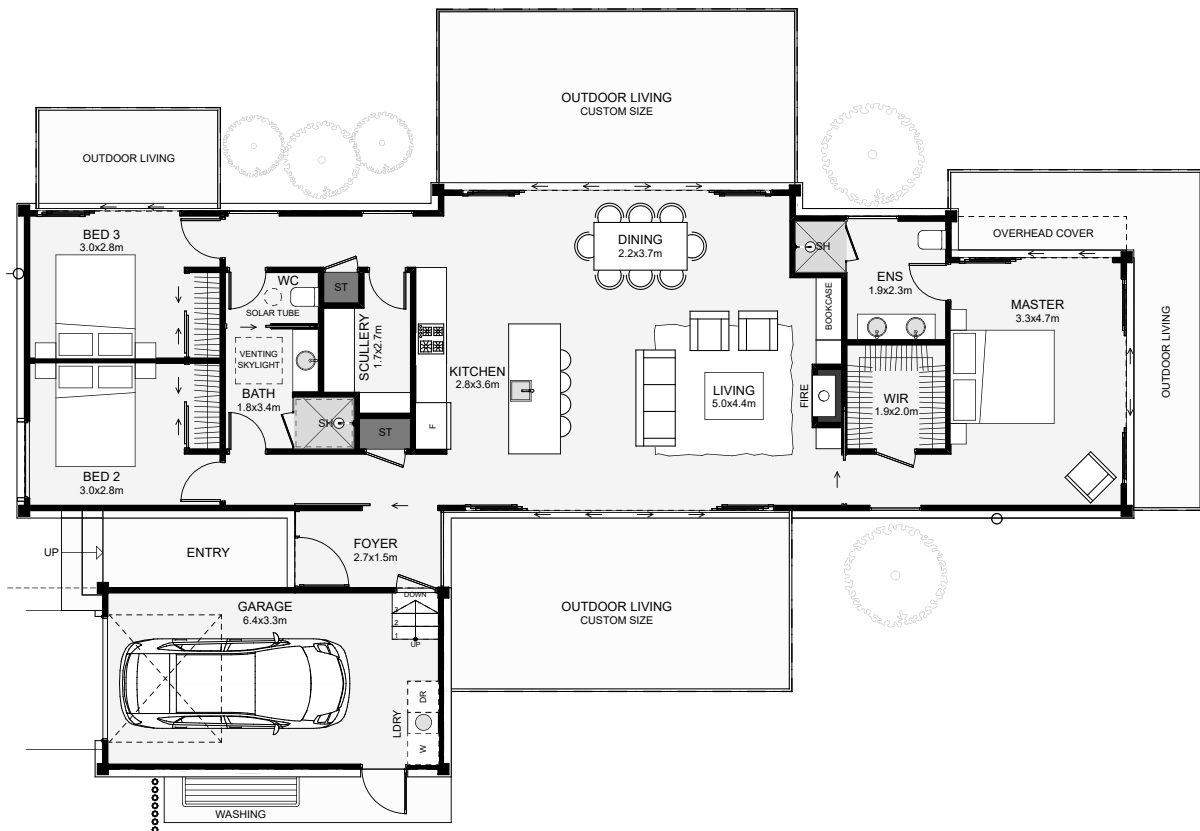




The detailing on this prefab gives it a modern modular look. Some great options come with this design including a scullery, an optional fireplace and a large walk-in wardrobe. Multiple outdoor living options will help maximise any expansive northern view you may have. You could really up the potential of your section with this stunning prefab!



Prefab Area: 127m<sup>2</sup> Garage Area: 23m<sup>2</sup> Total Area: 150m<sup>2</sup>

 21.3m  11.2m

Contact us:

Call Philip: 0407 803 310

E: philip@bingleybuild.com.au

[www.bingleybuild.com.au](http://www.bingleybuild.com.au)



**BINGLEY**  
Design & Build.