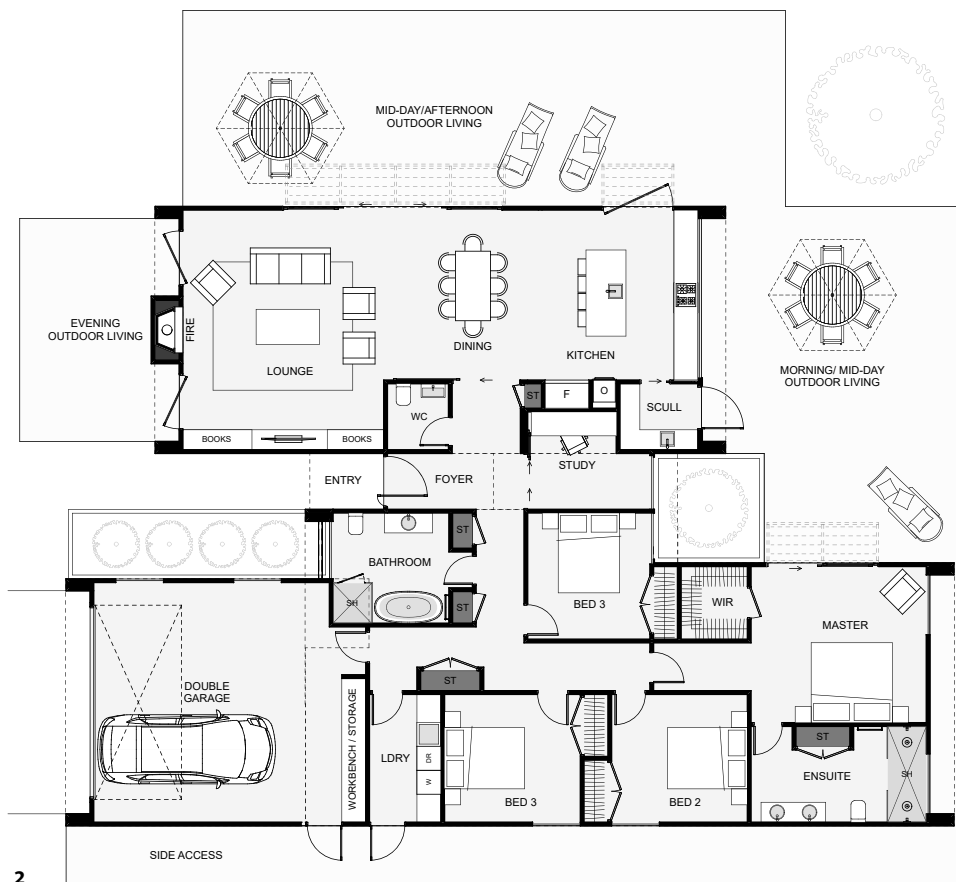




This modern four bedroom home has three core parts that make up its strong geometric frontage. When entering the foyer, a study slider can be opened so visitors can enjoy a view through full height glazing out to whatever centrepiece you desire. The dining takes in the morning sun from a large sliding window in the kitchen which drops right down to the bench level. Extra features include the scullery, a workbench within the garage and a large ensuite. If you're looking to build a bold home with a ton of features, this is it!



Floor Area: 240m²

 2
  4+
  2.5
  1
  22.2m
  15.5m

Contact us:

Call Philip: 0407 803 310

E: philip@bingleybuild.com.au

www.bingleybuild.com.au



BINGLEY
Design & Build.