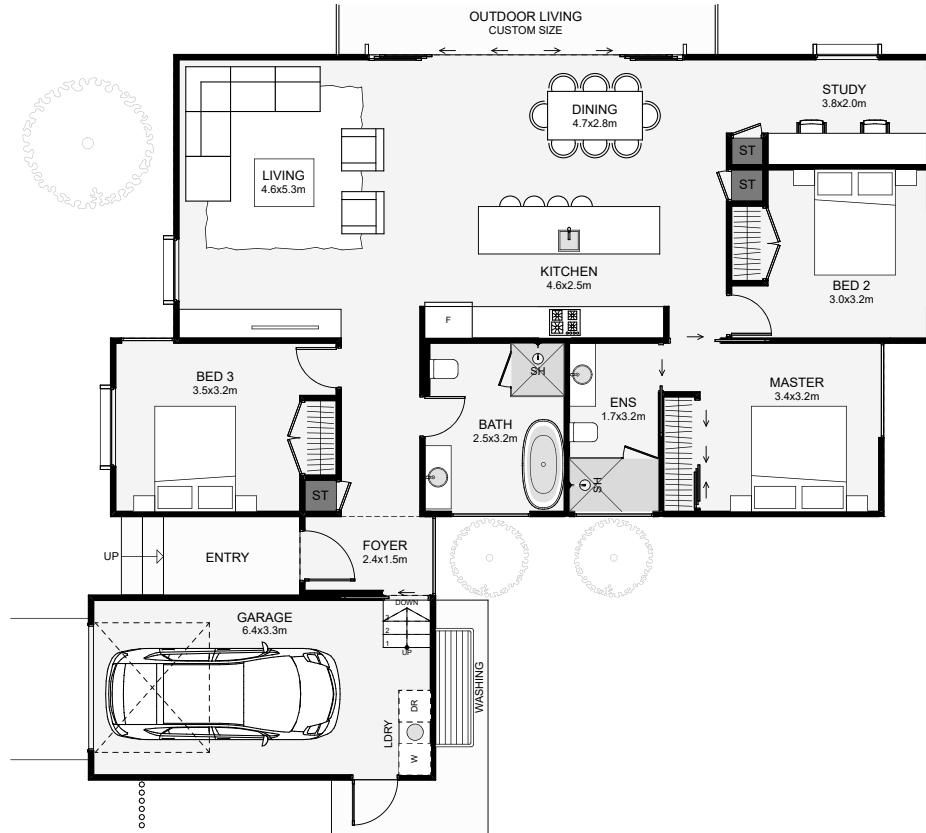




Triple gables, stained timber cladding and privacy louvres make this prefab appear like a full architectural home. Working from home also couldn't be better, with a long north facing study! Both bathrooms and kitchen are positioned back to back for simple, centralised plumbing. Prefab's don't have to be boring, especially when they're like this!



Prefab Area: 131m<sup>2</sup> Garage Area: 23m<sup>2</sup> Total Area: 154m<sup>2</sup>

 1  3+  2  1  23.2m  16.8m

Contact us:

Call Philip: 0407 803 310

E: philip@bingleybuild.com.au

[www.bingleybuild.com.au](http://www.bingleybuild.com.au)



**BINGLEY**  
Design & Build.