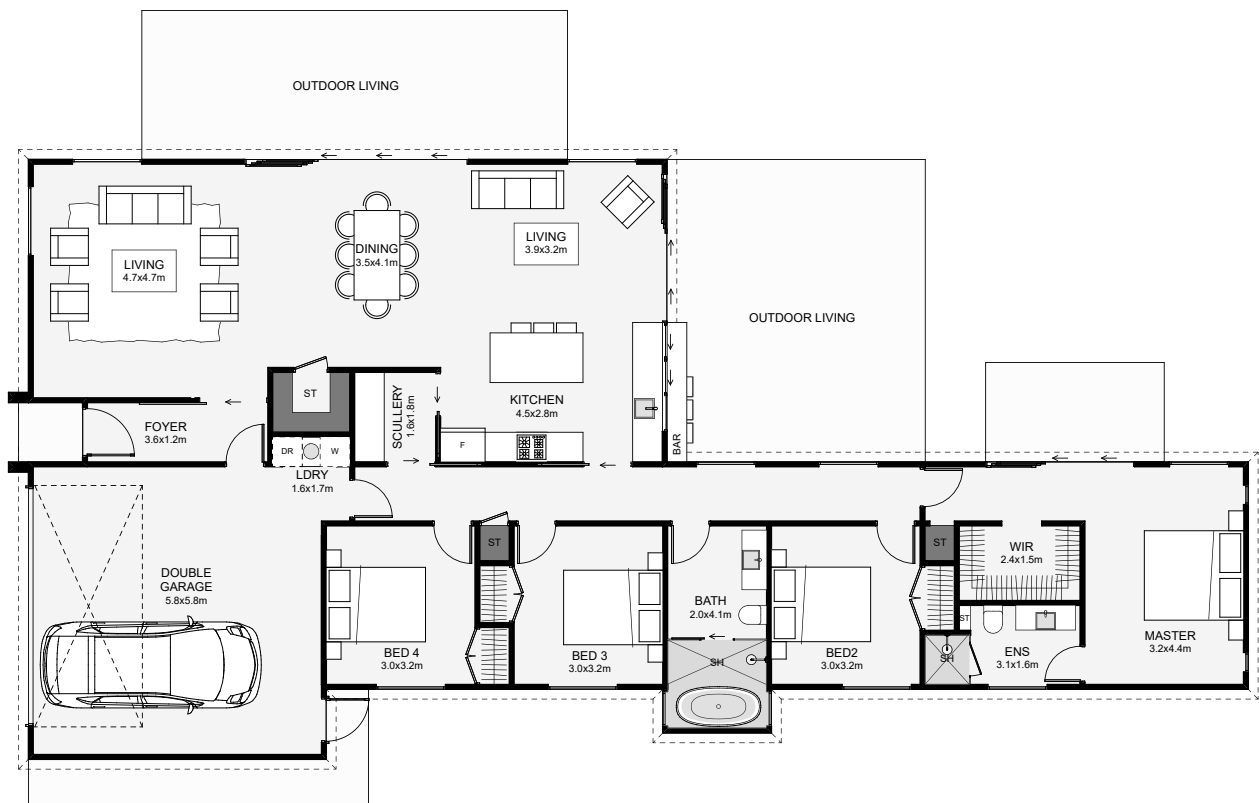




Dolan



Low maintenance and modern, this home also is full of great features! Inside you will enjoy, dual living, lots of storage, a scullery, an optional outdoor bar, a modern bathroom layout and a large walk-in wardrobe. This home would be great for a family or an investment home!



Floor Area: 199m²

2
 4
 2
 2
 25.0m
 12.1m

Contact Finlay:

Ph: 027 424 1600

E: www.hunterhomes.co.nz

www.hunterhomes.co.nz



HUNTER
HOMES BUILDING GROUP