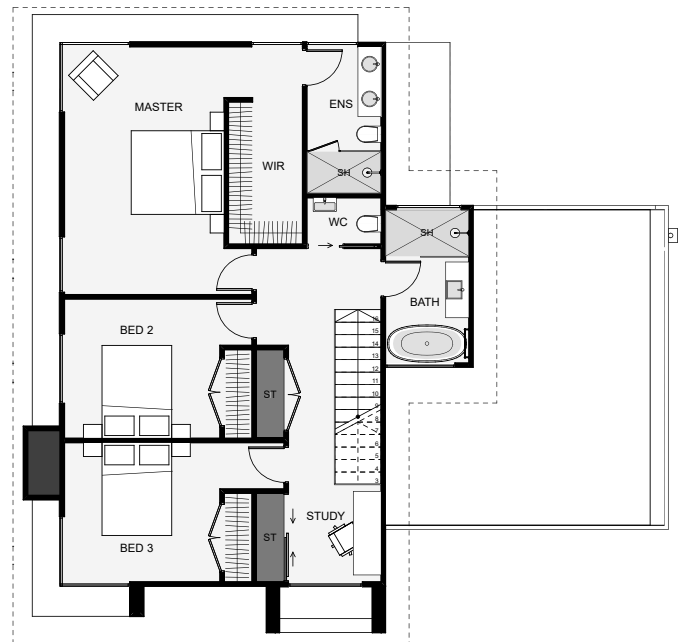
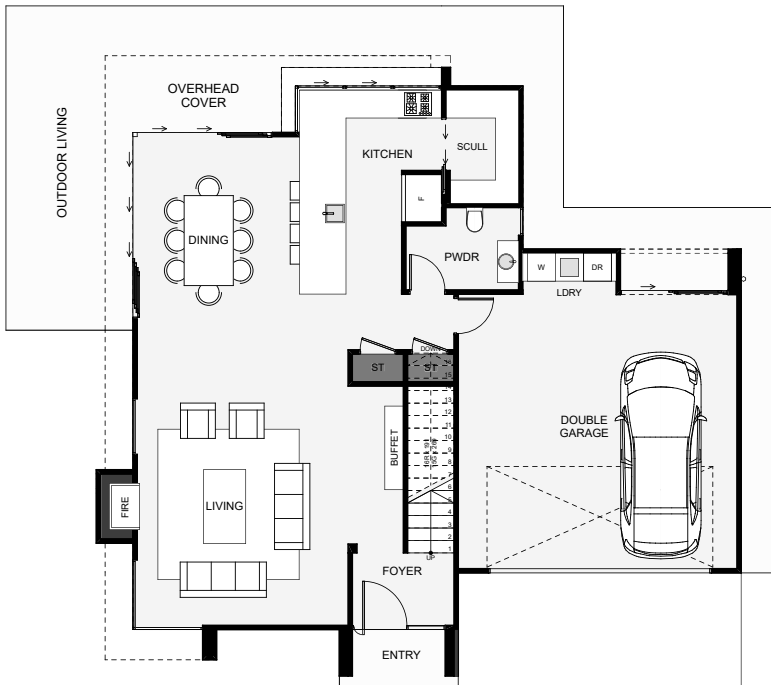




This ultra modern, three bedroom design looks like a large home from the outside thanks to the architectural styling, however, its just 206 square meters. The large extruding entry makes a real statement with fixed louvres giving the overhead study space some privacy from the street. Some features include a scullery, a large powder room for guests, a kitchen, an outdoor bar and plenty of storage throughout the home. If you like modern, this may fulfil your wish list!



Floor Area: 206m<sup>2</sup>

 2  3+  2+  1  13.9m  13.1m

Contact us:

Call Philip: 0407 803 310

E: philip@bingleybuild.com.au

[www.bingleybuild.com.au](http://www.bingleybuild.com.au)



**BINGLEY**  
Design & Build.