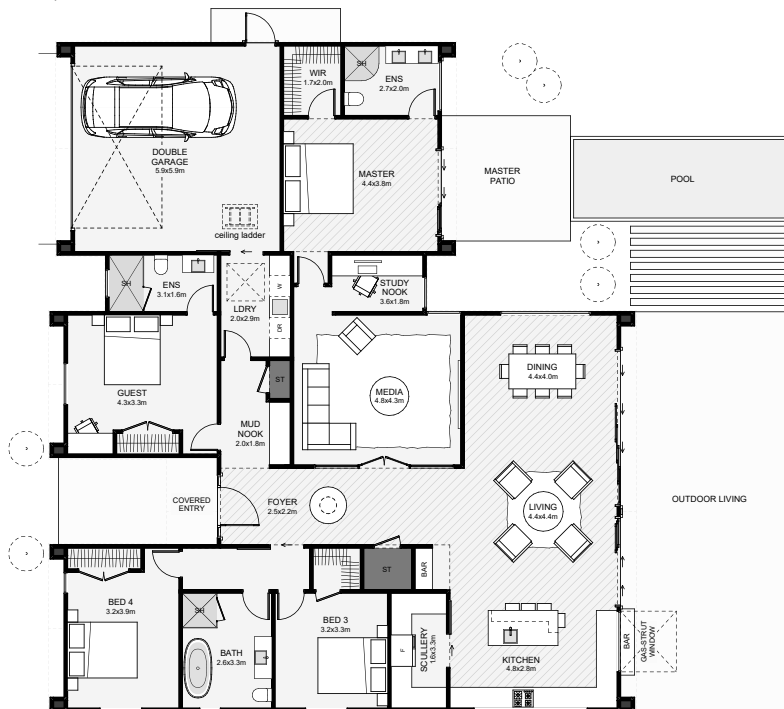




The foyer of this home sits centre with high ceilings and gives a glimpse of the blue sky towards the casual living. Off to one side, there's a mud-nook with laundry access. Full-height glass doors frame the media room in the wide, open hallway with an in-built bar adjacent. The kitchen sits full-width and extends into a large butler's pantry—There's also a giant gas strut window with an outdoor bar, perfect for summers by the pool! Privately accessed off the media with a study nook to buffer, the primary room looks out north with a private patio and optional pool access. This is a home designed to please!



Floor Area: 253m²

 2
  4+
  3
  2
 16.7m
 19.2m

Contact us:

Ph: 0277 508 926

E: horrellconstruction@gmail.com

www.horrellconstruction.co.nz



HORRELL
CONSTRUCTION