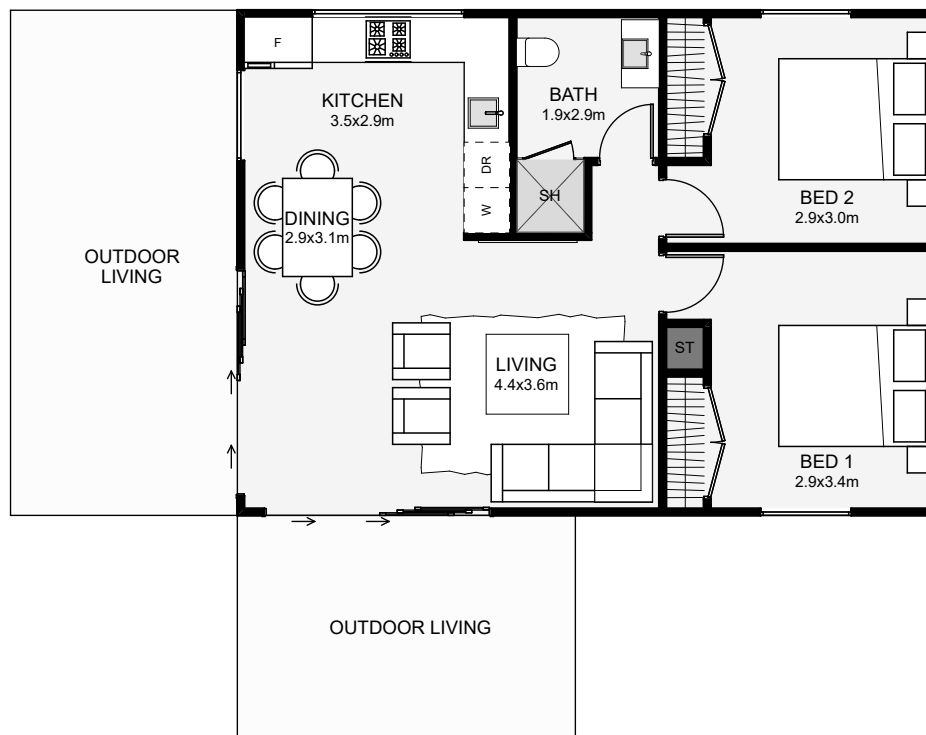




Small and modern, this two-bedroom dwelling is a perfect mix of style and usable space. Inside, the open plan living, dining and kitchen help maximise usable space within such a small footprint. This small home is sure to maximise the land it sits on whether that's in the backyard or at the beach!



Floor Area: 62m²

0
 2
 1
 1
 9.3m
 6.7m

Contact Jason:

Ph: 0277228930

E: jasonaddaroom@xtra.co.nz

www.addaroom.co.nz



ADDAROOM
Build & Design