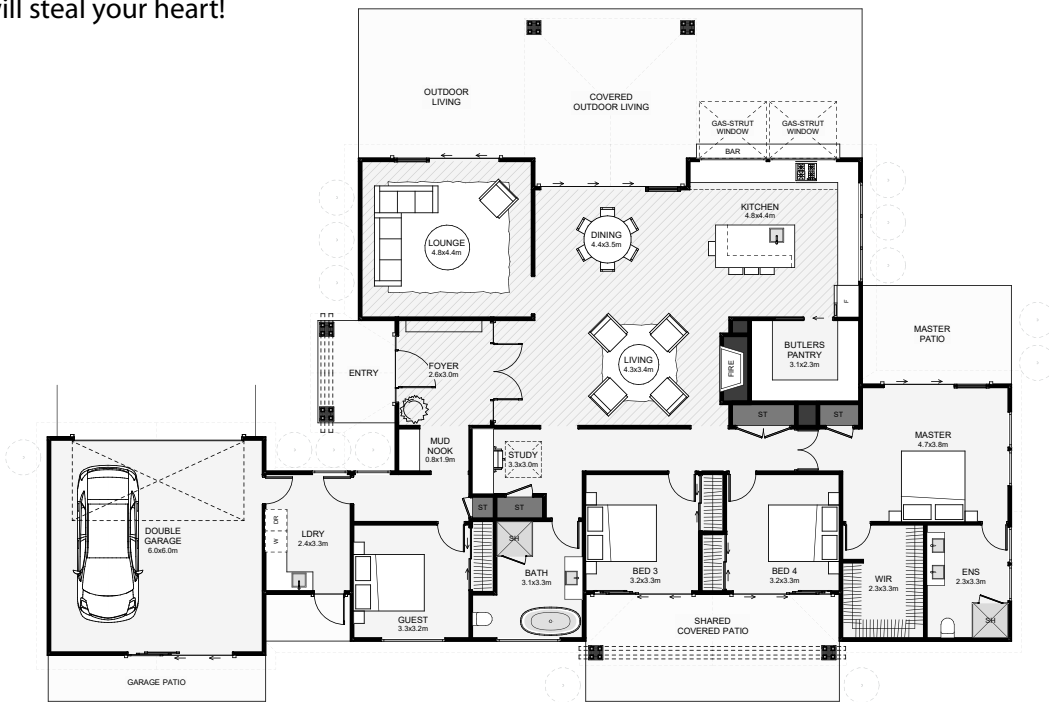




Right from entry, this elegant home will impress with its large foyer that aligns with large glass interior doors through to a casual living space with the warmth of a fireplace at the peak height of the grand-high, sloping ceiling above. Other features include a private lounge, a mud nook off the foyer, outdoor covered living, an outdoor bar with double gas-strut windows like no other, a large butlers pantry, a natural lit study and a separate guest bedroom for those that come and go. This home will steal your heart!



Floor Area: 255m²

2
 4
 2
 2
 27.3m
 18m

Contact David:

Ph: 021 258 4160

E: david@marsdenhomes.co.nz

www.marsdenhomes.co.nz

